The logo for RASE ENGINEERS features the word "RASE" in a bold, blue, sans-serif font. The letter "A" is replaced by a stylized graphic of three upward-pointing chevrons, each composed of parallel lines. Below "RASE", the word "ENGINEERS" is written in a smaller, blue, all-caps, sans-serif font.

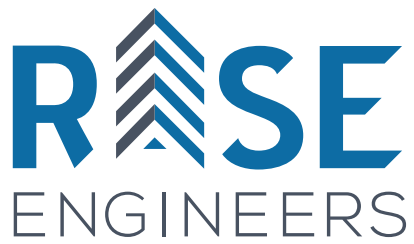
RASE ENGINEERS

Capability Statement

Structural, Civil, Remedial & Façade
Engineering Services

Designing Strength, Building Trust.





Contents

Our Mission & Vision - 1

Company Profile - 2

Our Services - 4

Key Personnel Profile - 6

Our Projects:

Multi Storey Mixed Use and Commercial - 8

Education and Government - 13

Senior Living and Boarding Houses - 16

Industrial - 17

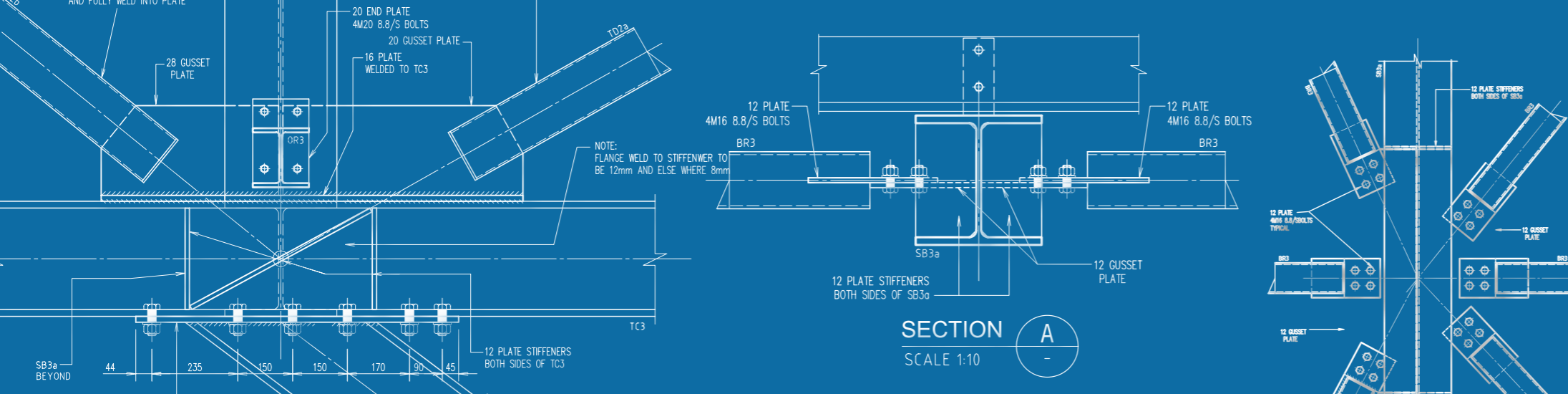
Low Rise Residential - 18

Remedial - 22

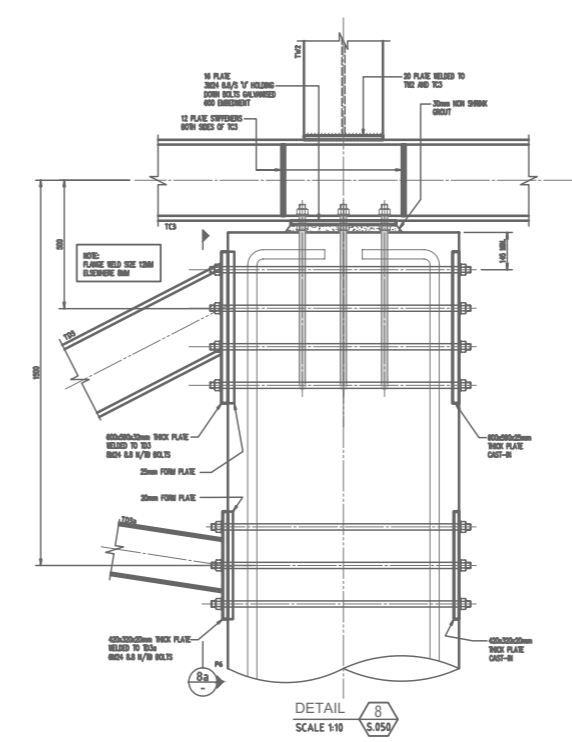
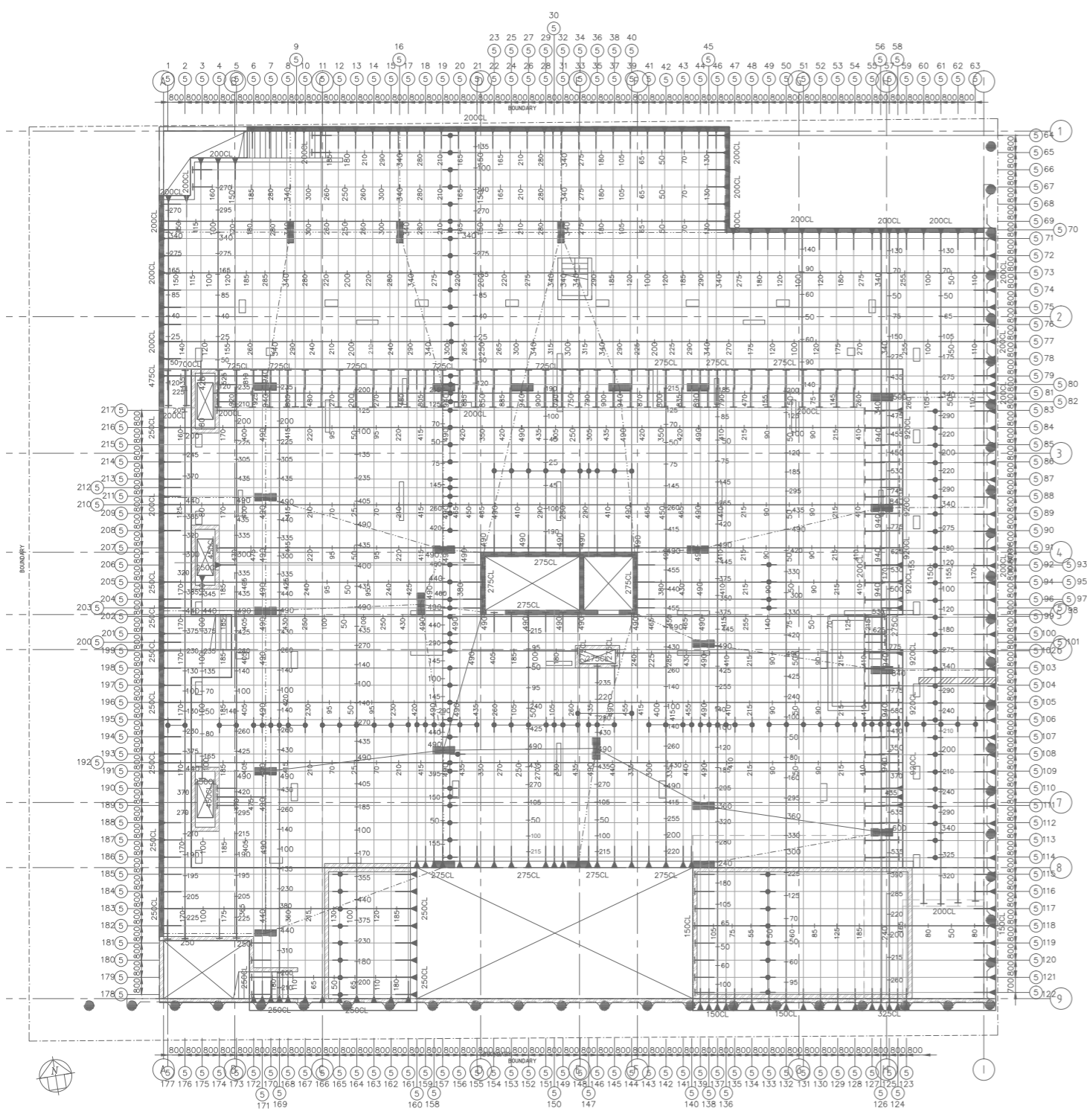
Testimonials - 24

Structural, Civil,
Remedial & Façade,
Consulting Engineers





Designing Strength, Building Trust.

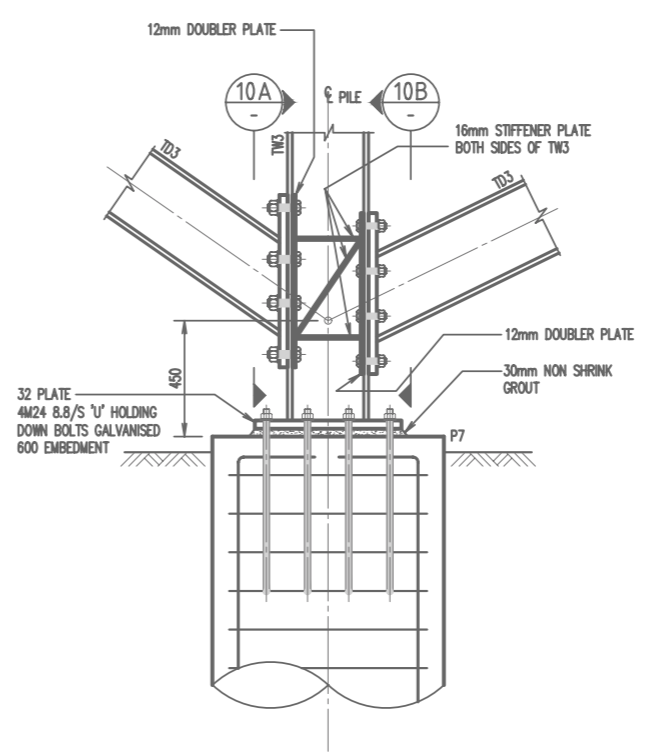


Our Mission

At Rise Engineers, our mission is to deliver exceptional structural engineering solutions that combine innovation, precision, and integrity. We are dedicated to transforming our clients' visions into resilient and functional structures through expert design, rigorous analysis, and personalised service. Our commitment is to build lasting partnerships by ensuring every project is executed with the highest standards of quality, safety, and sustainability.

Our Vision

Our vision is to be a leading provider of structural and civil engineering solutions, recognised for our commitment to growth, sustainability, and technical excellence. We aspire to expand our influence by continuously evolving our practices, embracing new technologies, and fostering strong relationships with our clients and partners. Our goal is to shape resilient and efficient infrastructures that support and enhance the growth of our communities and environment.



Company Profile

With over 60 years of combined experience, Rise Engineers is a team of highly skilled engineers and technical draftspersons, committed to delivering top-tier engineering services to clients across a variety of sectors and industries. Our head office is located in St Leonards, NSW.

We proudly extend our services throughout Greater Sydney and across Australia. With a proven history of successful and award-winning projects, our team possesses the capability to develop practical and innovative design solutions for even the most complex projects.

At Rise Engineers, quality is at the forefront of everything we do. We are an ISO9001 Certified Company, upholding the highest standards of excellence. Additionally, we are certified as a Building and Construction Manager (Residential) by Builders Academy Australia.



Our professional memberships include:



Our Awards



ASIS Steel Excellence Award Winner 2022
Awarded in the Small Projects category for Oceano St, Copacabana, NSW 2251. This accolade highlights the exceptional quality and innovation in the use of Australian steel, underscoring its elegance and versatility in design and construction.



Urban Engineer Winner 2024
Our director, Omid Safai, was honoured as the winner in the Urban Engineer Leaders awards. This recognition highlights individuals or teams responsible for engineering projects that exemplify excellence in the built environment.



ACSE NSW Awards Winner 2024
The ACSE Awards celebrate and highlight the outstanding work of consulting structural engineering firms and their professionals. These awards recognise exceptional achievements in both projects and people within the structural engineering field. Rise Engineers' Oceano project has been awarded the ACSE Small Project Award for 2024.

Award Winning Engineers



Our Services

Rise Engineers are proud to provide the following services:

Structural Design & Documentation including

- Building structural modelling
- Shoring piles design
- PT & conventional concrete framed buildings
- Steel framed structures (hot rolled and cold formed)
- Timber framed structures

Civil Design & Documentation including

- Roadways / driveways designs
- Turning circles / swept path analysis
- Public domain works design
- Earthworks plan

Stormwater Drainage Design & Documentation including

- WSUD / MUSIC Modelling / Water Quality Design
- DRAINS Modelling
- Onsite Detention / Retention Tanks (OSD / OSR)

Façade Engineering

- Preparation of reports
- Façade remedial rectifications

Remedial Engineering Services including

- Preparation of repair specifications
- Tender and contract administration
- Supervision and certification of construction works

Project Management

We are registered Design Building Practitioners under DBP Act 2020 for Class II projects.

Key Personnel Profile



Omid Safai

Managing Director

B.Eng (Civil), M.E, M.I.E (Aust), C.P.Eng, N.E.R,
APEC Engineer IntPE(Aus), Building Practitioner VBA, RPEQ

Omid has over 17 years of extensive experience in the structural and civil design of various building structures. As Managing Director of Rise Consulting Engineers, he oversees design verifications and project deliveries. His project expertise includes residential and commercial buildings, warehouse factory units, government structures, and low, medium, and high-rise buildings. He also specialises in building diagnostics and remedial engineering across both public and private sectors.

Omid has been appointed to the Board of Directors at ACSE (Association of Consulting Structural Engineers). He is passionate about structural engineering and specialises in delivering cost-effective design solutions that meet client needs while adhering to industry standards and codes of practice.

Zoe Gharebaghi

Team Leader / Structural / Civil Engineer

B.Eng (Civil), M.E

Zoe is a senior structural and civil engineer with 19 years of hands-on experience in designing and managing commercial and residential construction projects. She is known for applying innovative techniques to meet client needs while ensuring stakeholder alignment and clear communication throughout the project lifecycle, from conception to completion.

Mo Rowhani

Team Leader / Senior Structural Engineer

B.Eng (Civil), M.E, M.I.E (Aust)

Mo brings 23 years of experience in structural engineering, excelling in complex design and project execution. His deep understanding of materials and innovative problem-solving ensures that every project is delivered with structural integrity and safety. Mo is also dedicated to mentoring junior engineers, building a collaborative team culture that drives successful project outcomes.

Omid Safai - Managing Director

Kevin Ding

BIM Manager / Senior Revit Designer

B.Eng (Civil) M.Eng M. EngMgt

Kevin is the BIM Manager with over 15 years of experience, bringing expertise in transforming project workflows through advanced Building Information Modelling. His strategic vision and technical proficiency improve team collaboration, ensuring greater efficiency and accuracy in project delivery. Driven by a passion for innovation, Kevin continually leads initiatives that optimise project documentation presentation and foster a culture of continuous improvement.

Hamid Pilehvari

Civil Engineer

B.Eng (Civil), M.E. (Civil)

Hamid has 19 years of experience in civil engineering and construction/project management, with a proven track record of successfully delivering large-scale infrastructure projects. His strong leadership and meticulous planning ensure projects are completed on time, within budget, and to the highest standards. Hamid addresses project challenges with ease, ensuring client satisfaction and consistently delivering successful project outcomes.

Nabil Eftekhari

Structural / Civil Engineer

B.Eng (Civil), GradIEAust

Nabil specialises in modern design practices and detailed structural analysis, with a commitment to ensuring safety and delivering high-quality results. His attention to detail and proactive approach enable him to contribute valuable insights to complex engineering projects. Nabil thrives in collaborative settings and is always eager to expand his skills.

Nathan Cheah.

Flood Principal Engineer

With extensive expertise in hydrology and floodplain risk management, Nathan offers comprehensive solutions tailored to support various urban and rural development projects. From individual residential properties to larger-scale master plans and infrastructure projects, his expertise covers the entire spectrum.

Arif Hirani

Accountant

With 20 years of extensive experience in accounting and finance, Arif specialises in financial reporting, tax compliance, and auditing. His expertise spans across various industries, allowing him to implement best practices that enhance financial performance and ensure compliance.

Cloe Li

Marketing Specialist

Cloe is an innovative digital marketing specialist with over 4 years of experience in crafting and executing data-driven marketing strategies. Passionate about staying ahead of industry trends, she thrives in fast-paced environments and collaborates effectively to deliver impactful marketing solutions that align with business objectives.

Sahar Safai

Office Manager

Sahar is a highly organised and detail-oriented office manager with 15 years of experience, primarily in the banking sector. Skilled in project management, team coordination, and administrative support, she excels at streamlining processes to enhance productivity. Known for her strong communication and interpersonal skills, Sahar fosters a positive work environment, effectively manages vendor relationships, and ensures compliance with company policies, all while supporting the organisation's overall goals.



Multi Storey Mixed Use & Commercial Developments



Project:
Chalmers Cres, Mascot NSW 2020
Eleven-storey commercial development with 7 private office floors and 4 car park levels.

- Service Provided:**
- Structural Design and Documentation
 - Civil Design and Documentation
 - Stormwater Drainage Design and Documentation



Project:
George St, Hornsby NSW 2077
Fifteen-storey development with 76 units, 11 commercial spaces, 2 retail spaces and 4 basement car park levels.

- Service Provided:**
- Structural Design and Documentation
 - Civil Design and Documentation
 - Stormwater Drainage Design and Documentation



Project:
Joseph St, Lidcombe NSW 2141
Twelve-storey development with 97 apartments, 2 commercial spaces and 4 basement car park levels.

- Service Provided:**
- Structural Design and Documentation



Project:
Ingleburn Rd, Leppington NSW 2179
Complex of five storey residential units over four separate buildings on a common ground floor podium and 2 basement level carparks.

- Service Provided:**
- Structural Design and Documentation



Project:
Beatson St, Wollongong NSW 2500
Eight-storey mixed use development with 38 units.

- Service Provided:**
- Structural / Post Tensioned Concrete Design and Documentation



Multi Storey Mixed Use & Commercial Developments



Project:
Hunter St, Newcastle West NSW 2302
Multistorey mixed-use development with basement carpark level adjacent to rail corridor.

Service Provided:

- Civil Design and Documentation
- Stormwater Drainage Design and Documentation



Project:
Heath Rd, Leppington NSW 2179
Residential unit apartment with basement carpark levels.

Service Provided:

- Civil Design and Documentation



Project:
Chatswood Chase - Vicinity Centres
Refurbishment of the Chatswood Chase shopping centre including new fit out works to retain units.

Service Provided:

- Structural Design and Documentation



Project:
Hardy St, Fairfield, NSW 2165
Multistorey residential development with 2 basement level carparks.

Service Provided:

- Structural Design and Documentation



Project:
Edenholme Rd, Waremba NSW 2046
Additions to an existing residential unit building including additional floor of units, new lift & new stair case providing 30% additional unit numbers and floor space area.

Service Provided:

- Structural Design and Documentation
- Stormwater Drainage Design and Documentation



Project:
Hay St, Haymarket NSW 2000
Mixed use development at CBD.

Service Provided:

- Civil Design and Documentation
- Stormwater Drainage Design and Documentation
- Flood Analysis Report



Project:
Avon Rd, Dee Why NSW 2099
Multistorey residential unit development.

Service Provided:

- Civil Design and Documentation
- Stormwater Drainage Design and Documentation
- Flood Analysis Report



Project:
Edensor Rd, Bonnyrigg NSW 2177
Multistorey carpark development for a function centre.

Service Provided:

- Structural Design and Documentation

Multi Storey Mixed Use & Commercial Developments



Project:

Balmain Harbourfront

A complex of 8 x five storey building with common basement carpark levels

Service Provided:

- Structural Design and Documentation



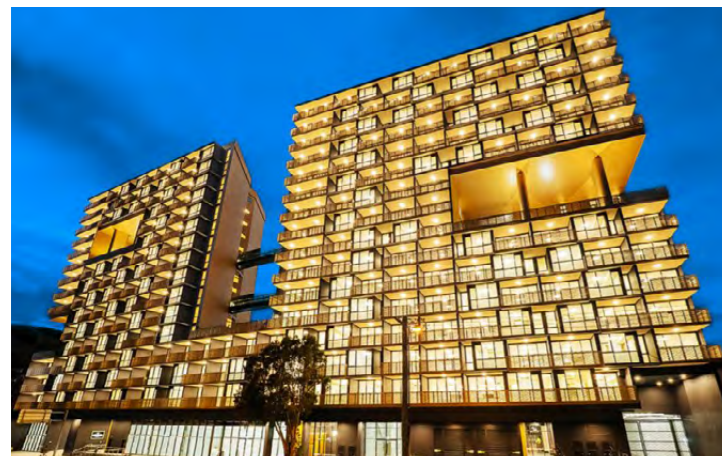
Project:

Quest Apartments Bella Vista

Five storey serviced apartment / Hotel

Service Provided:

- Structural Design and Documentation



Project:

Imperial Hurstville

Fifteen storey mixed use development with four basement carpark level

Service Provided:

- Structural Design and Documentation



Educational & Government

WestConnex
Building for the future

Project:

WestConnex M4-M5 Link Main Tunnel,
Pymont Bridge Rd
Various temporary structures.

Service Provided:

- Structural Design and Documentation



Project:

TAFE NSW, Pacific Hwy,
St Leonards NSW 2065

Service Provided:

- Remedial Engineering Services

Educational & Government

Project:

University of Sydney
New grandstand facility

Service Provided:

- Structural Design and Documentation



Project:

Greenacre Rd, Greenacre NSW 2190 - Alnoori School
Outdoor recreational area with 2 netball courts, large sitting and grassed playing areas.

Service Provided:

- Stormwater Drainage Design and Documentation
- Structural Design and Documentation



Project:

North Sydney Council NSW
Condition audit for over 900 retaining walls, spanning total length of more than 26km and reaching heights up to 10 metres.

Service Provided:

- Professional Engineering Services



Project:

Arthur Phillip High School, Macquarie St,
Parramatta NSW 2150
New school infrastructure including new buildings, learning areas and landscape

Service Provided:

- Structural Inspections / Certification



Senior Living & Boarding Houses

Project:
Avalon Pde, Avalon Beach NSW 2107
Low rise senior living development with 7 units.

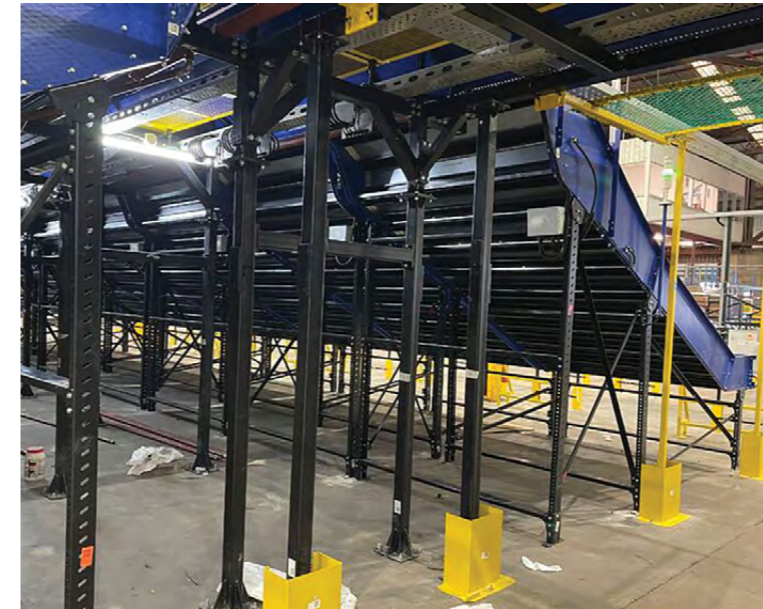
Service Provided:

- Structural Design and Documentation
- Services during construction

Project:
Bardo Rd, Newport NSW 2106
Low rise senior living development with 6 units and common basement car park.

Service Provided:

- Structural Design and Documentation
- Services during construction



Industrial

Project:
Anzac St, Chullora NSW 2190
Automated a system for packaging, handling, and sorting steel structures.

Service Provided:

- Structural Design and Certification



Project:
Arkley St, Bankstown NSW 2200
Warehouse development

Service Provided:

- Structural Design and Documentation
- Stormwater Drainage Design and Documentation



Project:
Prime Dr, Seven Hills NSW 2147
Industrial warehouse development

Service Provided:

- Structural Design and Documentation
- Civil Design and Documentation
- Stormwater Drainage Design and Documentation



Project:
Queen St, Revesby NSW 2212
Complex with 26 industrial office warehouses with mezzanine office floors.

Service Provided:

- Structural Design and Documentation
- Stormwater Drainage Design and Documentation

Our Projects

Low Rise Residential



Project:
 Oceano St, Copacabana NSW 2251
 Luxury award winning house overhanging from hill side with water view.

Service Provided:

- Structural Design and Documentation
- Civil Design and Documentation
- Stormwater Drainage Design and Documentation



Project:
 Kurnell house NSW 2231
 Luxury concrete framed three storey house with wet edge pool

Service Provided:

- Structural Design and Documentation
- Stormwater Drainage Design and Documentation



Project:
 Baldwin Avenue, Asquith NSW 2077
 Complex of 10 townhouses with a common basement car park.

Service Provided:

- Structural Design and Documentation
- Civil Design and Documentation
- Stormwater Drainage Design and Documentation



Project:
 Warners Ave & Eastern Valley Way, Willoughby NSW 2068
 Complex of 16 townhouses with a common basement car park.

Service Provided:

- Structural Design and Documentation
- Stormwater Drainage Design and Documentation
- Services during construction



Project:
 Minimbah Rd, Northbridge NSW 2063
 Luxury three storey house development with lift and wet edge pool.

Service Provided:

- Structural Design and Documentation

Low Rise Residential

Project:

Dumaresq St, Gordon NSW 2072
 Complex of 14 three storey luxury townhouses with 2 basement level carparks each with a lift.

Service Provided:

- Structural Design and Documentation
- Civil Design and Documentation
- Stormwater Drainage Design and Documentation



Project:

Kathleen Avenue, Castle Hill, NSW 2154
 Complex of 30 three storey townhouse development with split level basement carpark level.

Service Provided:

- Structural Design and Documentation



Project:

Ben Boyd Rd, Neutral Bay NSW 2089
 Complex of 8 luxury units development with basement carpark level.

Service Provided:

- Structural Design and Documentation
- Civil Design and Documentation
- Stormwater Drainage Design and Documentation



Project:

Nirvana St, Long Jetty NSW
 2 storey residential development

Service Provided:

- Structural Design and Documentation
- Civil Design and Documentation
- Stormwater Drainage Design and Documentation



Project:

Wheatleigh St, Crows Nest NSW 2065
 Complex of 4 two storey townhouses with a common basement carpark level.

Service Provided:

- Structural Design and Documentation
- Civil Design and Documentation
- Stormwater Drainage Design and Documentation



Project:

Warrangi St, Turramurra NSW 2074
 Complex of 3 townhouse development with common basement carpark level.

Service Provided:

- Structural Design and Documentation



Remedial

Project:

Hornby Lighthouse - S Head Heritage Trail, Watsons Bay NSW 2030

Restoration works to the heritage Hornby Lighthouse as featured on 9 News.

Service Provided:

- Remedial Engineering Services



Project:

Sussex St, Sydney 2000

Various remedial tasks, including concrete spalling rectification and façade safety measures.

Project:

Supa Centa Moore Park, Todman Ave, Kensington NSW 2033

Repair specification report for defects to the shoring walls of the shopping centre carpark levels.

Project:

St George Cres, Drummoyne NSW 2047

Various remedial tasks, including steel reinforcement, concrete spalling rectification, and drainage system repairs.

Project:

Eden Park Dr, Macquarie Park NSW 2113

Façade restoration for an existing commercial building.

Service Provided:

- Remedial Engineering Services

Service Provided:

- Remedial Engineering Services / Certification

Service Provided:

- Remedial Engineering Services

Service Provided:

- Façade Design / Certification

Testimonials

“Rise Engineering’s structural team played a pivotal role in enhancing the design efficiencies for our 16-townhouse development. Their thorough review of the existing design led to a recommendation to switch from block wall to AFS wall systems, which significantly improved both the structural design and the overall project timeline. Throughout the design, construction, and delivery phases, Omid and his team were transparent and excellent communicators. We greatly appreciate their expertise and professionalism, and look forward to many future projects with Rise Engineering.”

Wilma Leahy - Project Director
WINIM Developments Pty Ltd

“Omid and his team had provided effective and efficient steel structure design given complex site condition and its multi-function purpose. Rise always shows high quality profession in their structural engineering field with innovative approach and good communication to the stakeholders involved. TSS highly recommend Rise Consulting.”

Michael Shim - General Manager
TSS Engineering
Project: WestConnex M4-M5 Link Tunnels

“Rise Consulting Engineers were engaged in the Structural and Stormwater Design for our school playground. They had great communication and coordination during the planning and design phase. They were easily accessible during the construction and approval phase whether the contractors needed inspections or RFIs. Overall, they optimised our design for feasibility and constructability.”

Taha Jbara - Project Manager

“Rise Consulting was engaged with design work for structural and civil work of both projects. They’ve been instrumental in the design work for both structural and civil aspects of our projects. Their expertise is exceptional, and their designs are both cost-efficient and well-executed. They’re always available and prompt with their work. I consistently refer Rise to other developers because of their outstanding service.”

Jarrod Younan - Director
Nazero Constructions
Project: Tierra, Willoughby



Designing Strength,
Building Trust.

02 8057 9109

Rise Consulting Engineers Pty Ltd.
G03 / 15-19 Atchison St, St Leonards NSW 2065
Structural, Civil, Remedial & Façade Consulting Engineers

Email: admin@riseengineers.com.au
www.riseengineers.com.au

