



Structural,
civil and
remedial
engineers

Capability Statement

Engineering for the better future



Structural,
civil and
remedial
engineers



Company Profile

Over 15 years of experience Rise are a team of skilled Engineers and technical draftspersons providing high quality engineering services to our clients in various sectors and industries, our head office is based in St Leonards NSW.

Rise Engineers strive to provide their services across greater Sydney and beyond across Australia. With a proven track record of successful and award-winning projects, our team have the capacity and capability to identify feasible design solutions for any complex project.

We are proud to be an ISO9001 Certified Company. Our professional memberships include but not limited to:

- Institution of Engineers Australia
- Association of Consulting Structural Engineers NSW (ACSE)
- Registered Professional Engineers Queensland (RPEQ)
- Victorian Building Authority (VBA)
- Registered Design Building Practitioners (DBP Act 2020)





Our Services

Rise Engineers are proud to provide the following services:

- Structural Design & Documentation including
 - Building structural modeling
 - Shoring structures
 - PT & conventional concrete framed buildings
 - Steel framed structures (hot rolled and cold formed)
 - Timber framed structures

- Civil Design & Documentation including
 - Road ways / driveways designs
 - Turning circles / swept path analysis
 - Public domain works design

- Stormwater Drainage Design & Documentation including
 - WSUD / MUSIC Modeling / Water Quality Design
 - DRAINS Modeling
 - Onsite Detention / Retention Tanks (OSD / OSR)

- Remedial Engineering Services
- Project Management

Our Projects

Low Rise Residential

Project:

Baldwin Avenue, Asquith NSW 2077
Complex of 10 townhouses with a common basement car park.

Project Value: \$8,000,000

Service Provided:

- Structural Design and Documentation
- Civil Design and Documentation
- Stormwater Drainage Design and Documentation



Project:

Oceano St, Copacabana NSW 2251
Luxury award winning house overhanging from hill side with water view.

Project Value: \$2,000,000

Service Provided:

- Structural Design and Documentation
- Civil Design and Documentation
- Stormwater Drainage Design and Documentation



Low Rise Residential



Project:

Kiogle St, Wahroonga NSW 2076
Luxury award winning house.

Project Value: \$2,000,000

Service Provided:

- Structural Design and Documentation
- Civil Design and Documentation
- Stormwater Drainage Design and Documentation
- Services during construction

Project:

Warners Ave & Eastern Valley Way,
Willoughby NSW 2068
Complex of 16 townhouses with a common
basement car park.

Project Value: \$12,000,000

Service Provided:

- Structural Design and Documentation
- Stormwater Drainage Design and Documentation
- Services during construction



Multi Storey Mixed Use & Commercial Developments

Project:

George St, Hornsby NSW 2077
Fifteen-storey development with 76 units,
11 commercial spaces, 2 retail spaces and
4 basement car park levels.

Project Value: \$30,000,000

Service Provided:

- Structural Design and Documentation
- Civil Design and Documentation
- Stormwater Drainage Design and Documentation



Project:

Beatson St, Wollongong NSW 2500
Eight-storey mixed use development with 38 units.

Project Value: \$10,000,000

Service Provided:

- Structural/Post Tensioned Concrete Design and Documentation



Multi Storey Mixed Use & Commercial Developments



Project:

Chalmers Cres, Mascot NSW 2020
Eleven-storey commercial development with 7 private office floors and 4 car park levels.

Project Value: \$25,000,000

Service Provided:

- Structural Design and Documentation
- Civil Design and Documentation
- Stormwater Drainage Design and Documentation



Project:

Joseph St, Lidcombe NSW 2141
Twelve-storey development with 97 apartments, 2 commercial spaces and 4 basement car park levels.

Project Value: \$25,000,000

Service Provided:

- Structural Design and Documentation

Senior Living & Boarding Houses

Project:

Bardo Rd, Newport NSW 2106
Low rise senior living development with 6 units and common basement car park.

Project Value: \$5,500,000

Service Provided:

- Structural Design and Documentation
- Services during construction



Project:

Avalon Pde, Avalon Beach NSW 2107
Low rise senior living development with 7 units.

Project Value: \$5,000,000

Service Provided:

- Structural Design and Documentation
- Services during construction



Project:
TAFE NSW, Pacific Hwy, St Leonards NSW 2065

Project Value: \$500,000

Service Provided:

- Remedial Engineering Services



Project:
Greenacre Rd, Greenacre NSW 2190
Outdoor recreational area with 2 netball courts and large sitting / playing grassed areas.

Project Value: \$1,500,000

Service Provided:

- Stormwater Drainage Design and Documentation
- Structural Design and Documentation

Project:
WestConnex M4-M5 Link Main Tunnel,
Pyrmont Bridge Rd
Various temporary structures.

Project Value: \$3,000,000

Service Provided:

- Structural Design and Documentation

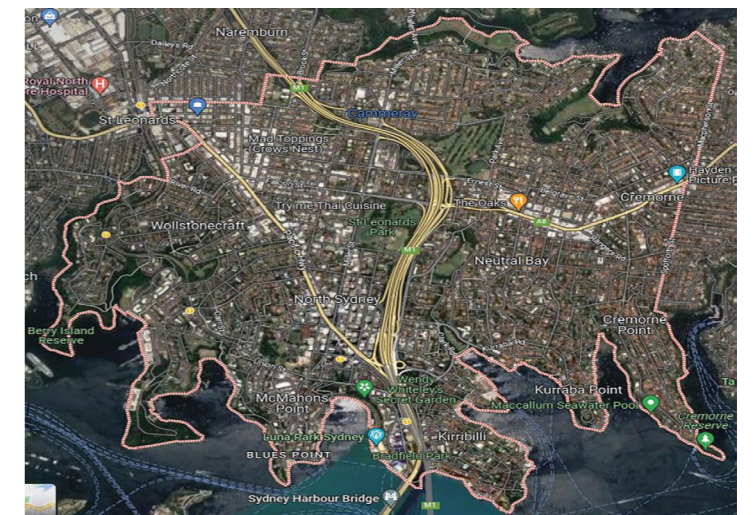


Project:
North Sydney Council NSW
Condition audit for over 900 retaining walls with total length of more than 26km and heights up to 10m.

Project Value: \$300,000

Service Provided:

- Professional Engineering Services



Industrial

**Project:**

Queen St, Revesby NSW 2212
Complex with 26 industrial office warehouses with mezzanine office floors.

Project Value: \$20,000,000**Service Provided:**

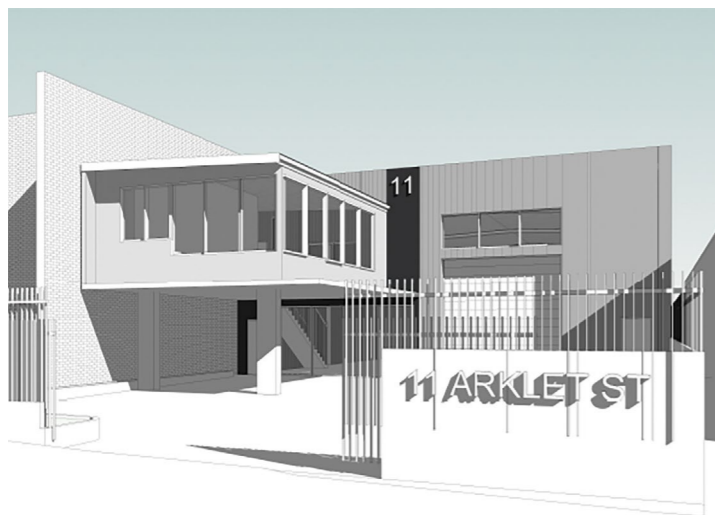
- Structural Design and Documentation
 - Stormwater Drainage Design & Documentation
-

Project:

Arkley St, Bankstown NSW 2200
Warehouse development.

Project Value: \$2,000,000**Service Provided:**

- Structural Design and Documentation
 - Stormwater Drainage Design and Documentation
-



Remedial

Project:

Sussex St, Sydney 2000
Various remedial works.

Project Value: \$1,000,000**Service Provided:**

- Remedial Engineering Services
-

**Project:**

St George Cres, Drummoyne NSW 2047
Various structural rectification works.

Project Value: \$300,000**Service Provided:**

- Remedial Engineering Services
-



Director Profile

Omid Safai

B.Eng (Civil), M.E, M.I.E (Aust), C.P.Eng, N.E.R, APEC Engineer IntPE(Aus),
Building Practitioner VBA, RPEQ

Managing Director

Since 2007, Omid has obtained extensive experience in the Structural and Civil design of various building structures. He is the Managing Director of Rise Consulting Engineers and is responsible for design verifications and project deliveries.

Experience includes:

- Residential and commercial buildings
- Warehouse factory units
- Government structures
- Low, medium and high-rise structures
- Building Diagnostics and Remedial
- Engineering in both public and private sectors

Omid is passionate about structures and the art of Structural Design. He specialises in alternative engineering and meeting client requirements through cost-effective design solutions which comply with industry Standards and Codes of Practice.



Sahar Safai

Dip. Accounting, Banking and Finance

Finance Director

Sahar is a co-founder of RISE overseeing all finance, administration, and Human Resources aspects of the company. She leads the administration team in the delivery of completed projects to our clients and is part of marketing the RISE brand to the construction industry of NSW.

Sahar holds a key role in RISE as the finance manager with 12 years of Banking and Finance and recruitment experience. Sahar is responsible for financial health of the organization, by monitoring and offering the best solution for the business.

Sahar is a keen socialiser with a friendly, polite manner. Sahar loves to socialise get to know every client on professional level, build rapport and tailor the services to their needs.



Structural,
civil and
remedial
engineers



02 8057 9109

Rise Consulting Engineers Pty Ltd.
G03 / 15-19 Atchison St, St Leonards NSW 2065
Structural, Civil & Remedial Consulting Engineers
admin@riseengineers.com.au

